

## Work instruction

### Poultry hygiene protocol

#### 1. **Objective**

Species-specific measures apply to different animal species with regard to the hygiene protocol. This document aims to formulate a policy for employees and visitors of the poultry facilities that:

- Minimizes the risk of introducing and spreading animal diseases.
- Is workable for staff.
- Is verifiable

In the event of emergencies, additional measures will be taken to prevent the risk of introducing and spreading animal diseases.

#### 2. **General**

Visitors from a region not free from notifiable diseases (regardless of animal species) must stay in a notifiable disease-free region for at least 3 days before visiting the SFR premises. In case of doubt, contact the Chief Veterinary Officer early. In case of doubt, contact the Chief Veterinary Officer early.

Visitors may enter the barn area only under the supervision of an SFR employee. A maximum of 4 visitors per visit are allowed into the poultry facilities. Visitors are informed of the applicable hygiene protocol, and the responsibility for ensuring compliance lies with the SFR supervisor.

Follow the diagram in Figure 1 to determine if a visitor is permitted access to the SFR premises and the poultry barns.

Note: In principle, as few poultry barns as possible are visited in one day. If multiple barns need to be visited, start from the barn with the lowest risk and move to the barn with the highest risk.

**Work instruction**  
Poultry hygiene protocol

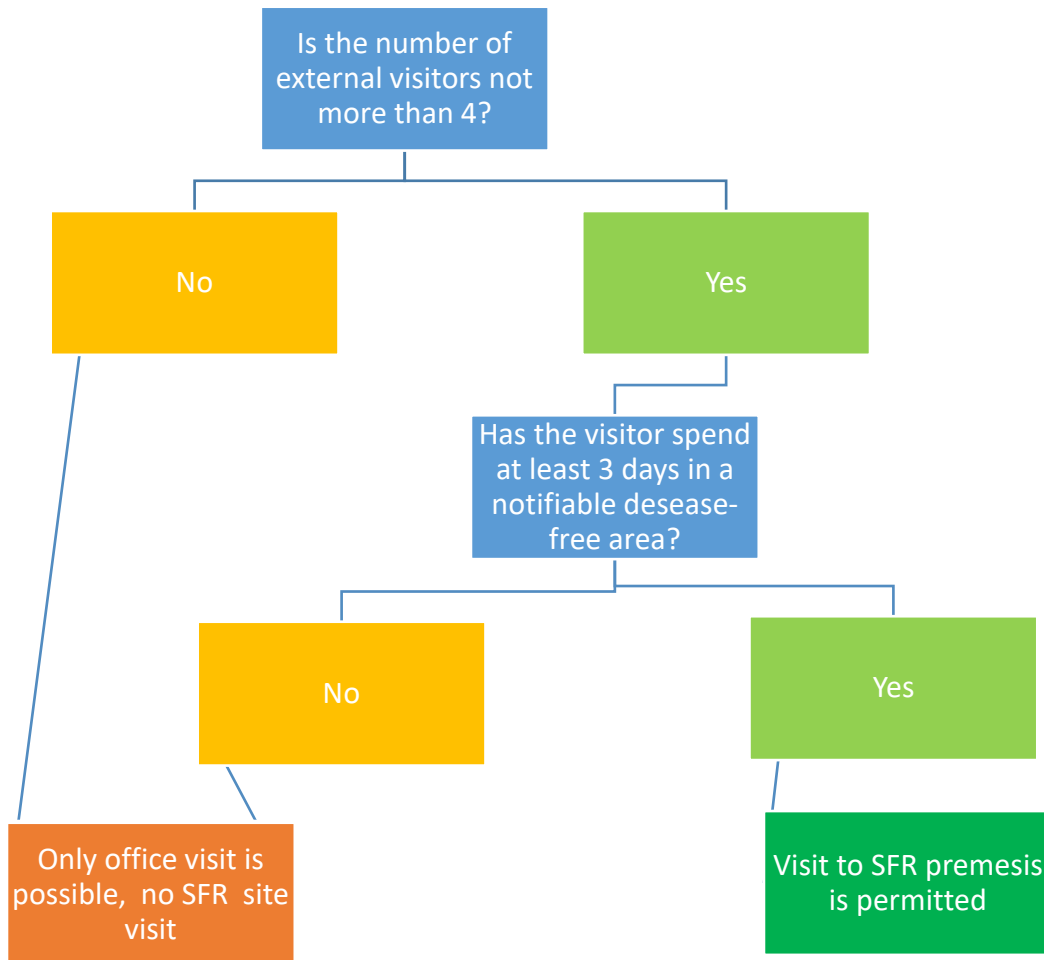


Figure 1 Visitors diagram

**3. Change and shower protocol (visitors and employees SFR)**

Everyone must shower in the general hygiene lock, before and after entering a poultry barn, after which they will put on outdoor clothing. The outdoor clothing is changed for barn-specific clothing in the designated poultry barn.

## Work instruction

### Poultry hygiene protocol

#### 3.1 Prior to the visit (see fig. 2)

##### In general hygiene lock (shower before entry):

- Place your own footwear on the rack by the door.
- Take a blue clothing bin, outdoor clothing (pants, socks, shirt and/or sweater) and 2 towels (one for showering before and one for showering after entry).
- Shower thoroughly using soap and shampoo (including washing your hair).
- Put on outdoor clothing (own personal underwear).
- Place the blue clothing bin (with your own clothes) on the shelf on the clean side.
- Put on the poultry-specific outdoor footwear (green).
- Proceed directly to the designated poultry barn.

##### Upon entering the poultry barn (changing clothes):

- Change from outdoor clothing and footwear to barn-specific clothing and footwear.
- Wash your hands with soap.

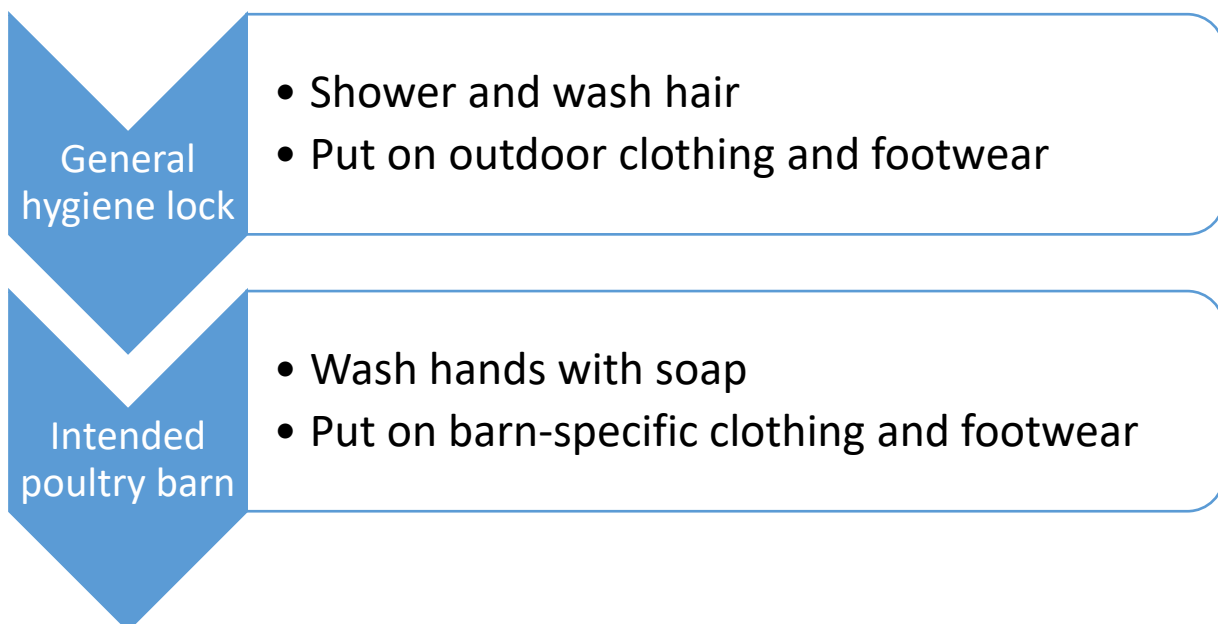


Figure 2 Towards the barns

## Work instruction

### Poultry hygiene protocol

#### 3.2 After barn visit (see fig. 3)

##### Upon leaving the poultry barn (changing clothes):

- Wash your hands with soap.
- Put on outdoor clothing.
- Place the barn-specific clothing in the laundry bin.
- Go directly to general hygiene lock.

##### In the general hygiene lock (shower):

- Put the poultry-specific outdoor footwear back on the rack.
- Take your own blue clothing bin.
- Shower thoroughly using soap and shampoo (including washing your hair).
- Place outdoor clothing and towel in the laundry bin.
- Put on your own clothes and footwear.

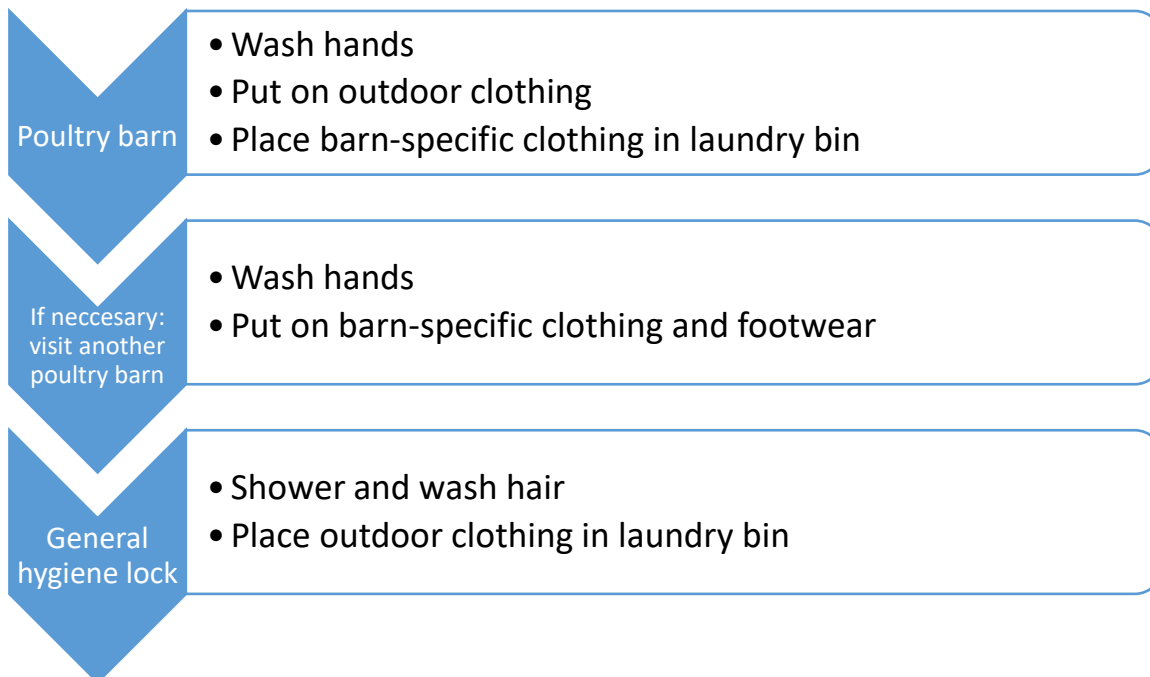


Figure 3 After barn visit

Barn-specific clothing is always worn inside the barn. Outdoor clothing is always worn on the premises. Hands must be washed with soap when entering and leaving a poultry barn.


## Work instruction

### Poultry hygiene protocol

#### 4. Emergencies

In case of emergencies, additional measures are taken. In the event of emergencies (animal diseases), you must shower again in **each poultry barn** before entering the barn and changing from outdoor to barn-specific clothing and vice versa.

When this emergency protocol is to be followed, it will be communicated through the various channels within SFR. The emergency protocol is intended to supplement this hygiene protocol and may be further expanded if necessary.

Instruction handbook	
Hygiene protocol SFR pigs Feb 2024 ENG	
Date: 01-02-2024	
Page: 1 of 5	Initials R.: 

## Work instruction

### Pigs hygiene protocol

#### 1. **Objective**

Species-specific measures apply to different animal species with regard to the hygiene protocol. This document aims to formulate a policy for employees and visitors of the poultry facilities that:

- Minimizes the risk of introducing and spreading animal diseases.
- Is workable for staff.
- Is verifiable

In the event of emergencies, additional measures will be taken to prevent the risk of introducing and spreading animal diseases.

#### 2. **General**

Visitors must not have had contact with any pigs (including pet, wild, or commercially kept) for at least 48 hours.

Visitors from a region not free from notifiable diseases (regardless of animal species) must stay in a notifiable disease-free region for at least 3 days before visiting the SFR premises. In case of doubt, contact the Chief Veterinary Officer early. In case of doubt, contact the Chief Veterinary Officer early.

Visitors may enter the barn area only under the supervision of an SFR employee. A maximum of 4 visitors per visit are allowed into the pigs facilities. Visitors are informed of the applicable hygiene protocol, and the responsibility for ensuring compliance lies with the SFR supervisor.

Follow the diagram in Figure 1 to determine if a visitor is permitted access to the SFR premises and the pigs barns.

**Work instruction**

Pigs hygiene protocol

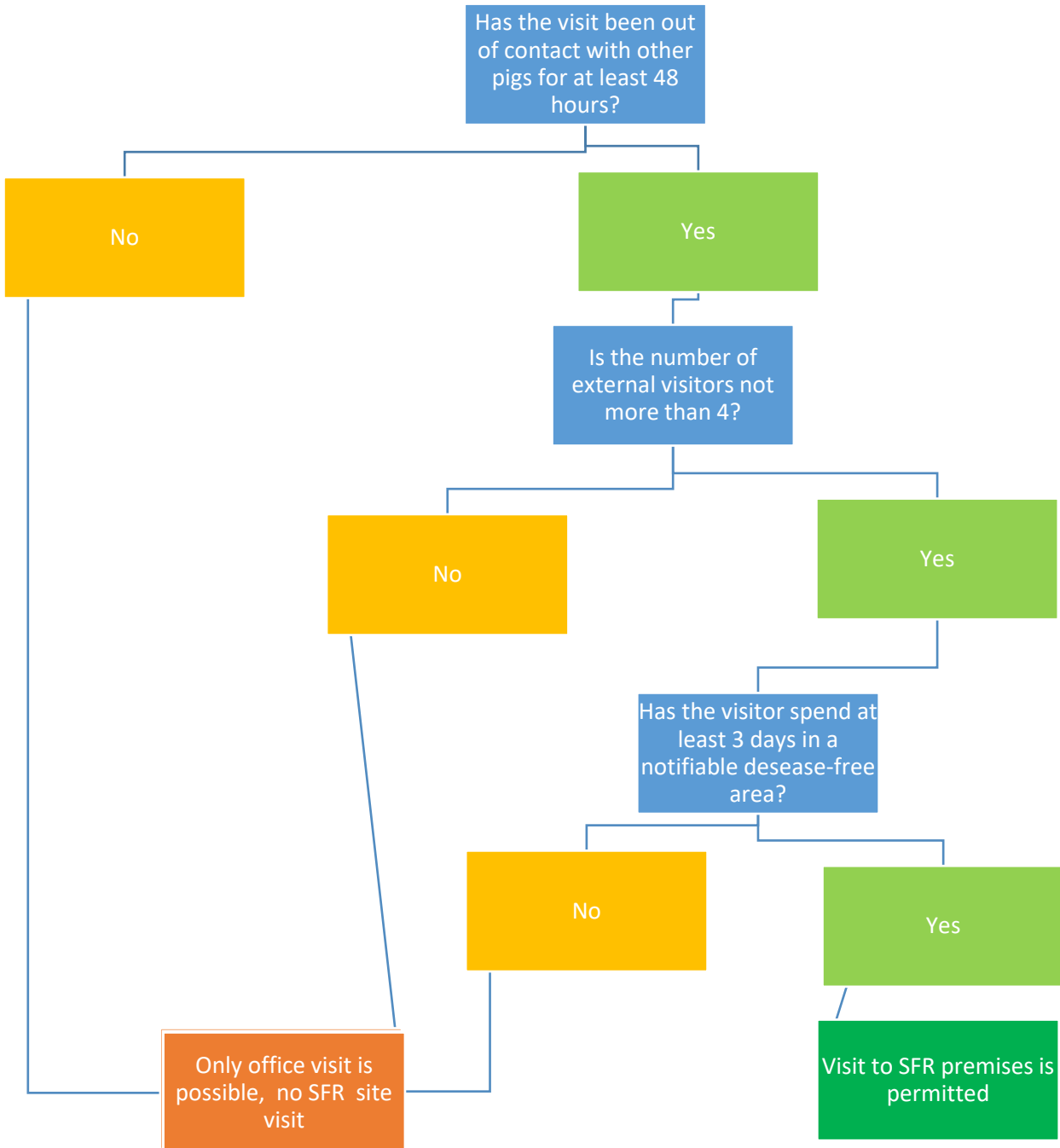


Figure 1 visitors diagram

## Work instruction

### Pigs hygiene protocol

### 3. **Change and shower protocol (visitors and employees SFR)**

Everyone must change clothing to outdoor clothes in the general hygiene lock, followed by showering in the pig barn hygiene lock before and after entering a pig barn.

#### 3.1 **Prior to the visit (see fig. 2)**

##### In general hygiene lock (changing clothes):

- Place your own footwear on the rack by the door.
- Take a blue clothing bin, outdoor clothing (pants, socks, shirt and/or sweater)
- Put on outdoor clothing.
- Place the blue clothing bin (containing your own clothes) on the shelf on the clean side.
- Wash your hands with soap.
- Put on the pig-specific outdoor footwear (blue).
- Proceed directly to the hygiene lock of the pig barn.

##### In the pig barn hygiene lock (shower):

- Place your pig-specific outdoor footwear left around the corner.
- Take a blue clothing bin.
- Go to a shower; signs on the shower doors indicate whether barn-specific men's and/or women's clothing is provided in that shower. Towels are available in the shower.
- Shower thoroughly using soap and shampoo (including washing your hair).
- Put on barn-specific clothing. This consists of: underwear, if applicable a bra, shirt, long/short pants and socks.
- Leave the blue clothing bin in the shower on the dirty side.
- Put on barn-specific footwear. This footwear is for walking the hallways.



## Work instruction

### Pigs hygiene protocol

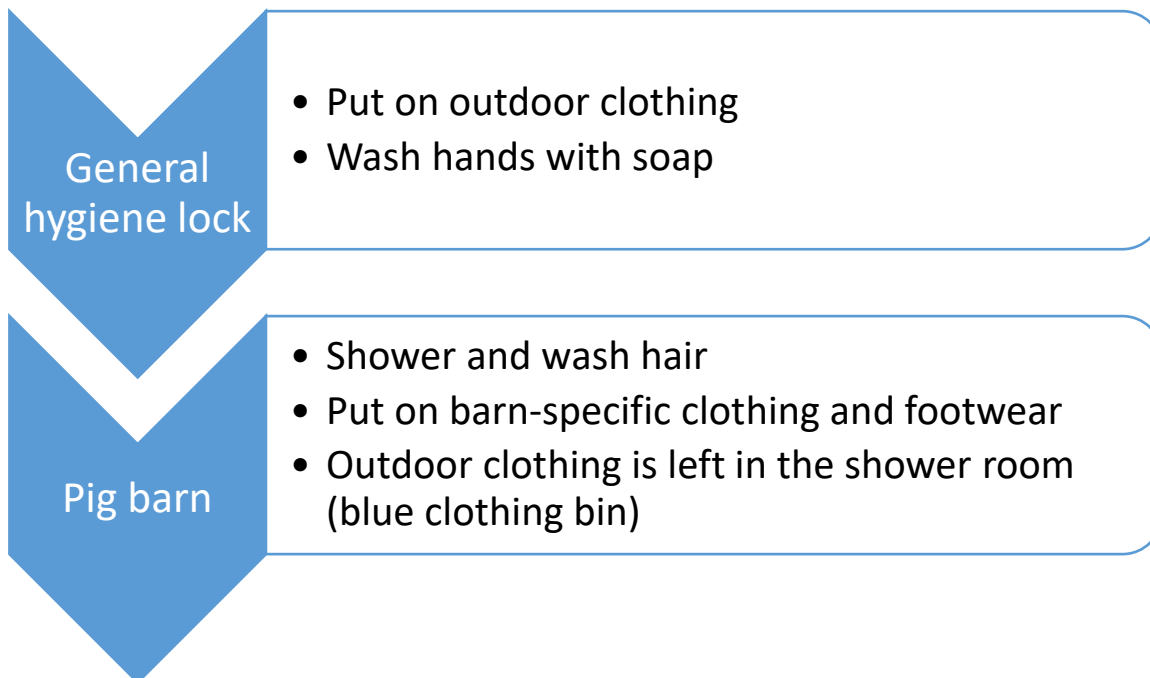


Figure 2 Toward the barns

### 3.2 After barn visit (fig. 3)

#### Upon leaving the pig barn (shower):

- Put barn-specific footwear back on the rack.
- Take your own blue clothing bin.
- Shower thoroughly using soap and shampoo (including washing your hair).
- Place the barn-specific clothing and used towels in the laundry bin.
- Put on outdoor clothing.
- Go directly to the general hygiene lock.

#### In general hygiene lock (changing clothes):

- Put the pig-specific site footwear back on the rack.
- Take your own blue clothing bin.
- Place outdoor clothing in the laundry bin.
- Put on your own clothes and footwear.

## Work instruction

Pigs hygiene protocol

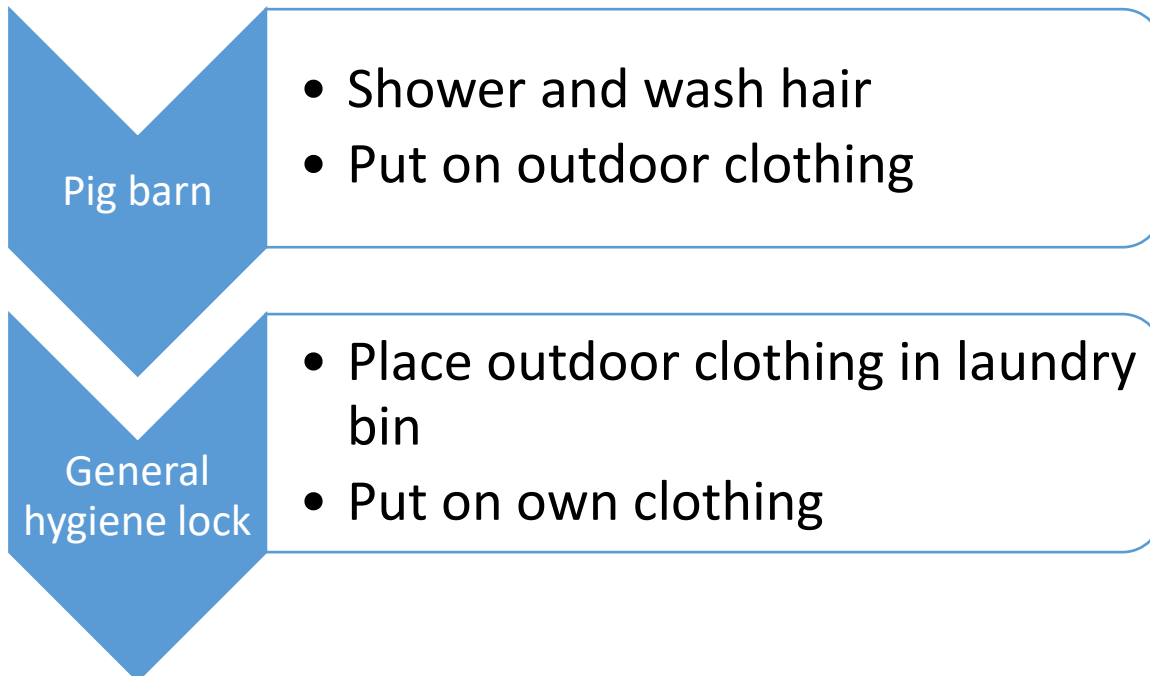



Figure 3 After visit

#### 4. Emergencies

In case of emergencies, additional measures are taken. This will be communicated through the various channels within SFR. The emergency protocol is intended to supplement this hygiene protocol and may be further expanded if necessary.

Instruction handbook	
Hygiene protocol SFR cattle Feb 2024 incl. excursion route	
Date: 01-02-2024	
Page: 1 of 5	Initials resp. : 

## Work instruction

### Cattle hygiene protocol

#### **Objective**

Species-specific measures apply to different animal species with regard to the hygiene protocol. This document aims to formulate a policy for employees and visitors of the poultry facilities that:

- Minimizes the risk of introducing and spreading animal diseases.
- Is workable for staff.
- Is verifiable

In the event of emergencies, additional measures will be taken to prevent the risk of introducing and spreading animal diseases.

#### **2. General**

Visitors from a region that is not free from notifiable diseases (regardless of animal species) must spend at least 3 days in a notifiable disease-free region before visiting the SFR premises. In case of doubt, contact the Chief Veterinary Officer early.

Visitors may enter the barn premises only under the supervision of an SFR employee. A maximum of 8 visitors per visit are allowed into the cattle facilities. Visitors are informed of the applicable hygiene protocol, and the responsibility for ensuring compliance lies with the SFR supervisor.

Follow the diagram in Figure 1 to determine if a visitor is permitted access to the SFR premises and the cattle barns and whether showering is required.

**Work instruction**  
Cattle hygiene protocol

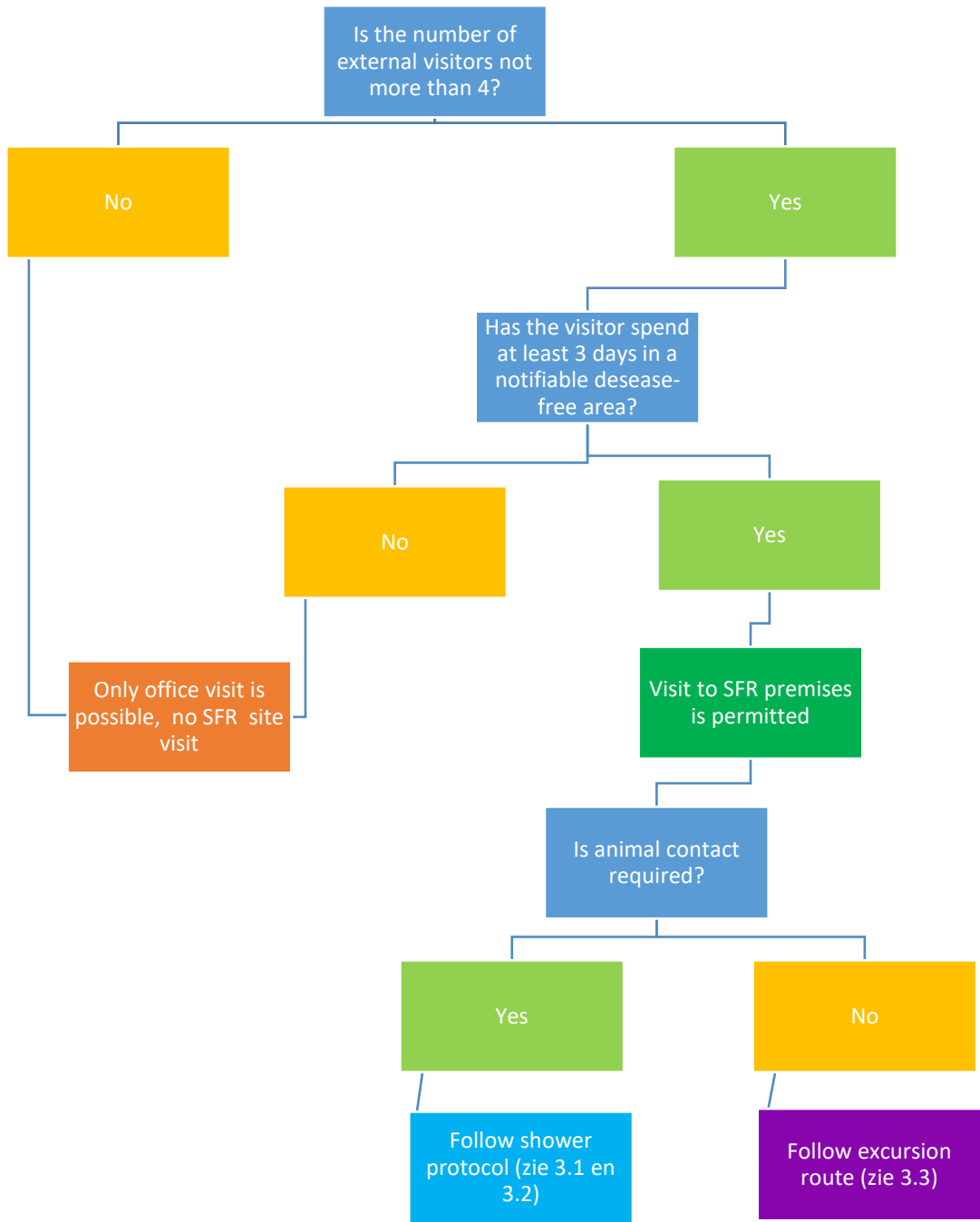


Figure 1 Visitors diagram

## Work instruction

### Cattle hygiene protocol

#### 3. **Change and shower protocol (visitors and employees SFR)**

- If no emergencies are present (at cattle), there is no need to shower for employees, provided there has been no contact with ruminants, pigs or poultry on the same day. \* If someone has had animal contact (with one of the above-mentioned species) they must always shower in the general hygiene lock first before entering the cattle barns.
- Visitors from outside must always shower except when strictly following the excursion route.

\* *Employees must sign a declaration confirming this responsibility.*

#### 3.1 **Prior to the visit with animal contact (shower):**

##### In general hygiene locker (shower):

- Place your own footwear on the rack by the door.
- Take a blue clothing bin, site-specific clothing (pants, socks, shirt and/or sweater) and a towel.
- Shower thoroughly using soap and shampoo (including washing your hair).
- Put on outdoor clothing (own personal underwear)
- Place the blue clothes bin (containing your own clothes) on the shelf on the clean side.
- Put on the cattle-specific outdoor footwear (red).
- Proceed directly to the designated cattle barn.

##### In the cattle barn:

- Put on barn-specific coverall.
- Change from cattle-specific outdoor footwear to barn-specific boots.

#### 3.2 **After barn visit**

##### In the cattle barn:

- Rinse and put back the barn-specific boots and put back the barn-specific coverall.
- Put on the cattle-specific outdoor footwear.
- Go directly to the general hygiene lock.

##### In the general hygiene locker

- Put the cattle-specific site footwear back on the rack.
- Wash your hands with soap.
- Take your own blue clothing bin.
- Place outdoor clothing in the laundry bin.
- Put on your own clothes and footwear.

## Work instruction

### Cattle hygiene protocol

#### 3.3 Excursion protocol (no animal contact):

##### Prior to excursion:

- Place your own footwear in the general hygiene lock on the rack by the door.
- Take a blue clothing bin and outdoor socks.
- Change from own socks to outdoor socks.
- Put on a disposable coverall.
- Put the blue clothing bin (containing your own socks) on the shelf on the clean side.
- Wash your hands with soap.
- Put on the cattle-specific outdoor footwear (red).
- Keep strictly to the excursion route (see annex 1).
- When entering the feed corridor, plastic overshoes are worn over the cattle-specific outdoor footwear (or barn-specific boots).
- Visitors are not allowed to touch any animals or feeds during the visit.

##### After excursion:

- Put the cattle-specific site footwear back on the rack in general hygiene lock.
- Place disposable coverall and plastic overshoes in the waste bin.
- Wash your hands with soap.
- Take your own blue clothing bin.
- Place outdoor socks in laundry bin and put on own socks and footwear.

#### 4. Emergencies

In case of emergencies, additional measures are taken. Depending on the emergency, these additional measures may include:

- No visitors access to SFR grounds (except necessary visitors).
- Always shower before and after entering cattle facilities.
- Strict separation of clothing and footwear between dairy cattle and young stock.
- Etc.

When this emergency protocol is to be followed, it will be communicated through the various channels within SFR. The emergency protocol is intended to supplement this hygiene protocol and may be further expanded if necessary.

## Annex 1: Cattle Excursion Route

